

M350-100 Chopped M&M'S® Milk Chocolate Candies



Issue Date:	3/12/2019	Revision:	B
-------------	-----------	-----------	---

PRODUCT DESCRIPTION	
Varying sized pieces of chopped M&M candy	

PHYSICAL ATTRIBUTES							
Appearance:	Irregular pieces varying in size and shape						
Color:	Various colors						
Flavor:	Typical M&M candy flavor						
Pack Size:	2x5 Lbs. poly bags per corrugated case						
Case Dimensions:							
L[depth]xWxH in.	7	14.5	6	Case Cube(ft ³):	0.3524	Pallet Conf. (TI / HI)	15 10

INGREDIENTS	
MILK CHOCOLATE (SUGAR, CHOCOLATE, SKIM MILK, COCOA BUTTER, LACTOSE, MILKFAT, SOY LECITHIN, SALT, ARTIFICIAL AND NATURAL FLAVORS), SUGAR, CORNSTARCH, LESS THAN 1% - CORN SYRUP, DEXTRIN, COLORING (INCLUDES BLUE 1 LAKE, YELLOW 6, RED 40, YELLOW 5, BLUE 1, YELLOW 6 LAKE, RED 40 LAKE, YELLOW 5 LAKE, BLUE 2 LAKE, BLUE 2), CARNAUBA WAX, GUM ACACIA.	

ALLERGENS:	CONTAINS: MILK AND SOY. MAY CONTAIN: PEANUTS.
-------------------	---

NUTRITIONAL INFORMATION	
NUTRIENT	Per 100g
CALORIES	477.3195
TOTAL FAT (g)	18.7815
SATURATED FAT (g)	11.5518
TRANS FAT (g)	0.0876
CHOLESTEROL (mg)	7.9818
SODIUM (mg)	70.0995
TOTAL CARBOHYDRATE (g)	72.0397
DIETARY FIBER (g)	2.5402
TOTAL SUGARS (g)	64.5040
ADDED SUGARS (g)	60.1206
PROTEIN (g)	4.7946
VITAMIN D (mcg)	0.0455
CALCIUM (mg)	119.0576
IRON (mg)	1.1927
POTASSIUM (mg)	290.3004



Nutrition Facts	
About 189 servings per container	
Serving size	2 Tbsp (24g)
Amount per serving	
Calories	110
	% Daily Value*
Total Fat 4.5g	6%
Saturated Fat 3g	15%
Trans Fat 0g	
Cholesterol 0mg	0%
Sodium 15mg	1%
Total Carbohydrate 17g	6%
Dietary Fiber 1g	4%
Total Sugars 15g	
Includes 14g Added Sugars	28%
Protein 1g	
Vitamin D 0mcg	0%
Calcium 29mg	2%
Iron 0mg	0%
Potassium 70mg	2%
<small>*The % Daily Value tells you how much a nutrient in a serving of food contributes to a daily diet. 2,000 calories a day is used for general nutrition advice.</small>	

Brand Name:	TR Toppers	Net Weight: (Lbs.)	10.00
Country of Origin	USA	Net Weight: (Kg.)	4.54
Case GTIN	0 06 51844 10001 4	Gross Weight: (Lbs.)	11.00
Kosher	Star-D	Gross Weight: (Kg.)	4.99
Metal Detection	1.5mm Ferrous	1.8mm Non-Ferrous	2.0mm SS316

MICROBIOLOGICAL ATTRIBUTES*	
Attributes	Limits
Total Aerobic Plate Count (cfu/g)	<20,000
Yeast and Mold (cfu/g)	<50
E. coli (MPN/g)	<1
Salmonella (/375g)	Negative
Coliform (MPN/g)	<10

*The above attributes are provided by the product manufacturer. Parameters are guaranteed attributes.

GMO STATEMENT	
	Produced with Genetic Engineering.
X	Partially Produced with Genetic Engineering.
	May be produced with Genetic Engineering.
	NOT Produced with Genetic Engineering.

STORAGE CONDITIONS	
Recommended Condition:	Best kept refrigerated ($\leq 40^{\circ}\text{F}$).
Alternate Condition:	May be frozen ($\leq 10^{\circ}\text{F}$).
Alternate Condition:	May be kept at temperatures $\leq 75^{\circ}\text{F}$, $< 55\%$ RH. Seal container and refrigerate after opening.

SHIPPING CONDITIONS	
Recommended Condition:	May be shipped refrigerated ($\leq 40^{\circ}\text{F}$).
Alternate Condition:	May be shipped frozen ($\leq 10^{\circ}\text{F}$).
Alternate Condition:	May be shipped at temperatures $\leq 75^{\circ}\text{F}$, 45-55%RH.

SHELF LIFE	
Recommended Shelf Life:	365 days at recommended storage conditions.
Alternate Shelf Life:	Calculate 1/2 of the remaining shelf life after opening (Seal container and refrigerate after opening).
Alternate Shelf Life:	N/A

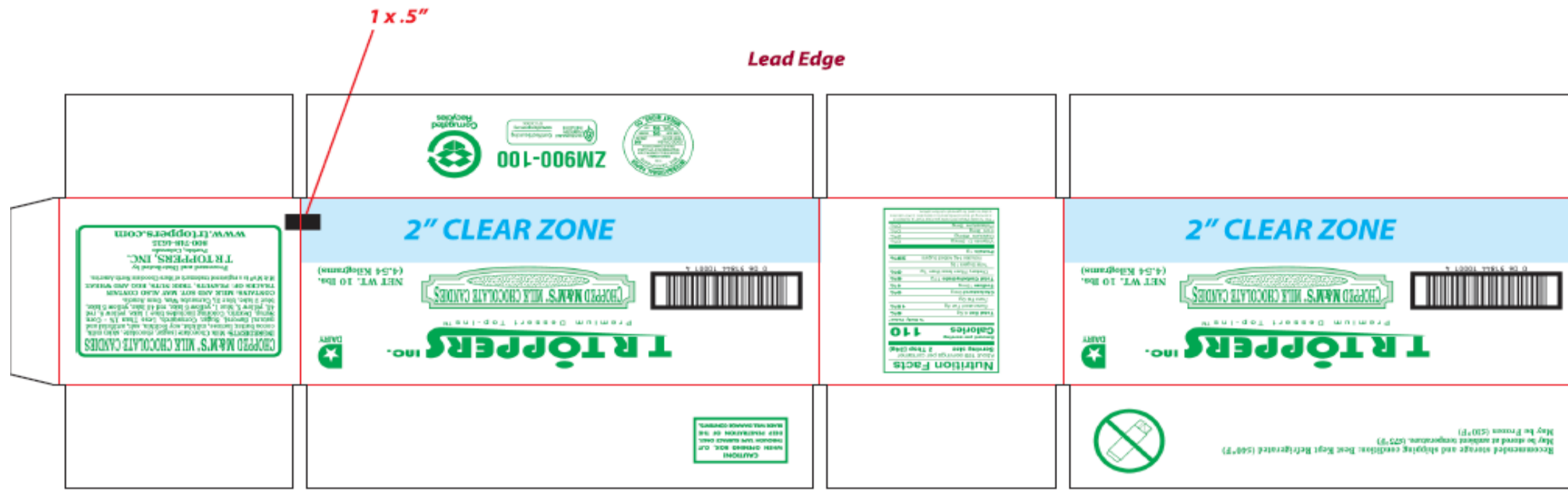
ALLERGEN / SENSATIZER TABLE			
COMPONENT	PRESENT IN PRODUCT	PRESENT IN PRODUCTS MANUFACTURED ON THE SAME LINE	PRESENT IN THE SAME MANUFACTURING PLANT
PEANUTS AND DERIVATIVES	MAY CONTAIN	YES	YES
TREE NUTS AND DERIVATIVES	NO	YES	YES
EGG AND DERIVATIVES	NO	YES	YES
MILK AND DERIVATIVES	YES	YES	YES
SOY AND DERIVATIVES	YES	YES	YES
WHEAT	NO	YES	YES
FISH	NO	NO	NO
CRUSTACEAN SHELLFISH	NO	NO	NO
SULFITES > 10 ppm	NO	NO	YES
MUSTARD	NO	NO	NO
SESAME	NO	NO	NO
GLUTEN	NO		
ARTIFICIAL FLAVOR SOURCE	Vanillin		
FD&C ARTIFICIAL COLORS	Yellow 5 Lake, Red 40 Lake, Blue 1 Lake, Yellow 6 Lake, Blue 2 Lake, Yellow 5, Red 40, Blue 1, Yellow 6, Blue 2.		

GRANULATION										
Sieve Size	On 1/4"	On #8	On #12	Pan						
%	36.5 - 67.4	26.6 - 49.3	0.6 - 4.4	0.3 - 14.9						

CODE FORMAT	EXAMPLE: 25811 15:32 M350-100
Case Code - Left Side: Julian Date, Time, M350-100 PCO, BB MM-YYYY	JJJ = Production Julian Date 258 = September 15; Y = Last Digit of Year 1 = 2011; L = Line (Numeric) 1 = Line 1; Time: HH:MM 15:32 = 3:32 p.m. Product Code = (e.g. M350-100)
Case Code - Right Side: Julian Date, Time, M350-100 PCO, BB MM-YYYY	
Pallet Markings: JJJY, Pallet #, M350-100	

LABEL / CASE GRAPHICS





CHOPPED M&M'S® MILK CHOCOLATE CANDIES

INGREDIENTS: Milk Chocolate (sugar, chocolate, skim milk, cocoa butter, lactose, milkfat, soy lecithin, salt, artificial and natural flavors), Sugar, Cornstarch, Less Than 1% - Corn Syrup, Dextrin, Coloring (includes blue 1 lake, yellow 6, red 40, yellow 5, blue 1, yellow 6 lake, red 40 lake, yellow 5 lake, blue 2 lake, blue 2), Carnauba Wax, Gum Acacia.

CONTAINS: MILK AND SOY. MAY ALSO CONTAIN TRACES OF: PEANUTS, TREE NUTS, EGG AND WHEAT.

M & M's® is a registered trademark of Mars Chocolate North America.

Processed and Distributed by
TR TOPPERS, INC.
 Pueblo, Colorado
 800-748-4635
www.trtoppers.com



NET WT. 10 lbs.
 (4.54 Kilograms)

CAUTION!
 WHEN OPENING BOX, CUT THROUGH TAPE SURFACE ONLY. DEEP PENETRATION OF THE BLADE WILL DAMAGE CONTENTS.



TR TOPPERS INC.

Premium Dessert Top-Ins™



Nutrition Facts

About 189 servings per container
Serving size 2 Tbsp (24g)

Amount per serving		% Daily Value*
Calories	110	
Total Fat 4.5g		6%
Saturated Fat 3g		15%
Trans Fat 0g		
Cholesterol 0mg		0%
Sodium 15mg		1%
Total Carbohydrate 17g		6%
Dietary Fiber less than 1g		0%
Total Sugars 15g		
Includes 14g Added Sugars		28%
Protein 1g		
Vitamin D 0mcg		0%
Calcium 29mg		2%
Iron 0mg		0%
Potassium 0mg		0%

*The % Daily Value (DV) tells you how much a nutrient in a serving of food contributes to a daily diet. 2,000 calories a day is used for general nutrition advice.

Recommended storage and shipping condition: Best Kept Refrigerated (≤40°F)
 May be stored at ambient temperature. (≤75°F)
 May be Frozen (≤10°F)



ZM900-100

